

## CD-ROM Jukebox Product info

# CD-ROM Jukebox Coupler

## Enhance your audio storage



## OVERVIEW

---

In order to easily access up to 500 CD-ROM and enhance the available audio storage to up to **3000 hours of stereo sound**, Numisys proposes an integrated CD-ROM Jukebox coupler.

Using this component, NUMISYS proposes a “ **nearline** ” **audio access** for:

- program transmission
- audition & editing
- backup & restore

# FUNCTIONS OF THE SYSTEM

---

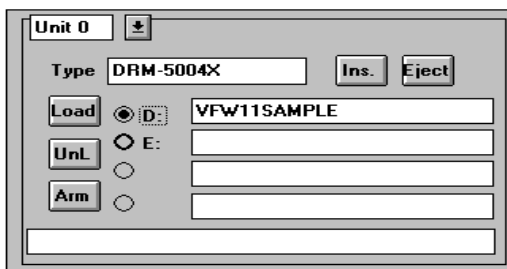
The CD-ROM Jukebox coupler provides the following features:

- \* **management of CD-ROMs in Jukebox**
- \* automatic transfer of audio used for transmission
- \* automatic access to audio for audition/edition
- \* access to multiple media sources for restoring position
- \* management of priority between the different tasks

---

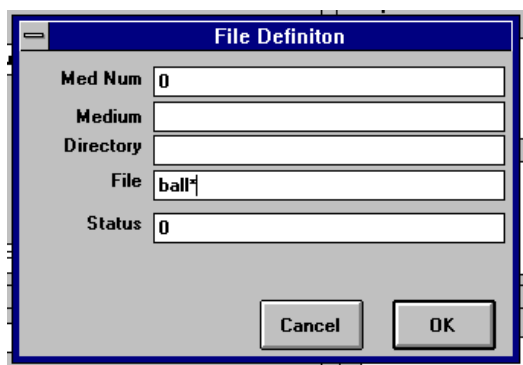
## Management of CD-ROMs

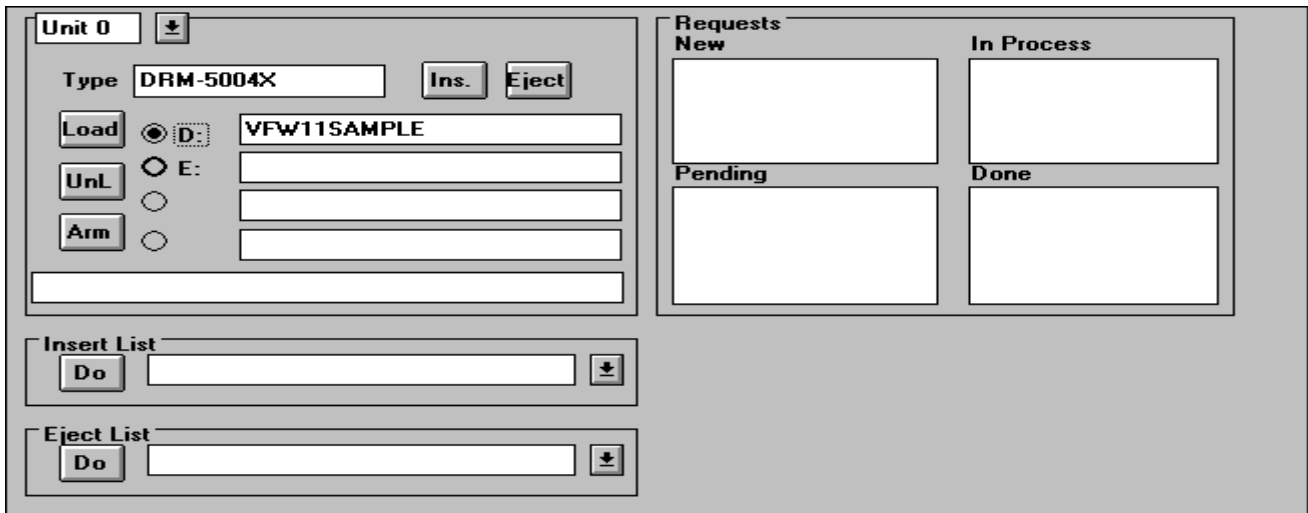
---



The coupler includes a man machine interface to perform the following features:

- load a CD-ROM
- eject a CD-ROM
- change location of a CD-ROM
- load/unload a player with a CD-ROM
  
- search a file in the Jukebox






---

### Use for Transmission

---

Audio items used for on Air transmission may be located on CDs into the Jukebox.

The CD-ROM jukebox is able to:

- preload audio items into the central server according to scheduled playlists.
- provide direct access to audio items for unexpected items.

Use of audio located in Jukebox is then fully transparent and secured for On Air operations.

---

### Use from Archiving

---

All CD-ROMs located in the Jukebox may be used by the archiving position.

It is then possible to:

- Select an archiving session (set of audio or entire show with playlist) in one of the CDs
- Choose one or several items
- Restore audio & data associated into the central library

---

### Use for Audition/editing

---

The Jukebox coupler may be controlled by all applications requiring audio material.

The main applications are:

- editing software: audition and use in an edit list
- audition module: capability to listen to an audio archived from scheduling position.

---

### Priority Management

---

As many applications may send request to the jukebox coupler, a priority management is implemented in order to:

- ensure On Air use
- classify user by priority

## TECHNICAL SPECIFICATIONS

---

### Pioneer CD Jukebox

- DRM-5004X
- accepts up to 500 CDs
- expandable by 100 CDs magazines
- up to 4 players available

### Performances

- transfer speed 300 KB/s (allows to transfer **10s of stereo sound in ONE second**)

### Minimum configuration required

- PC Pentium 133Mhz 16MB RAM running under WINDOWS with SVGA display
- 500 MB required for software
- 2 SCSI boards for control and data transfer